



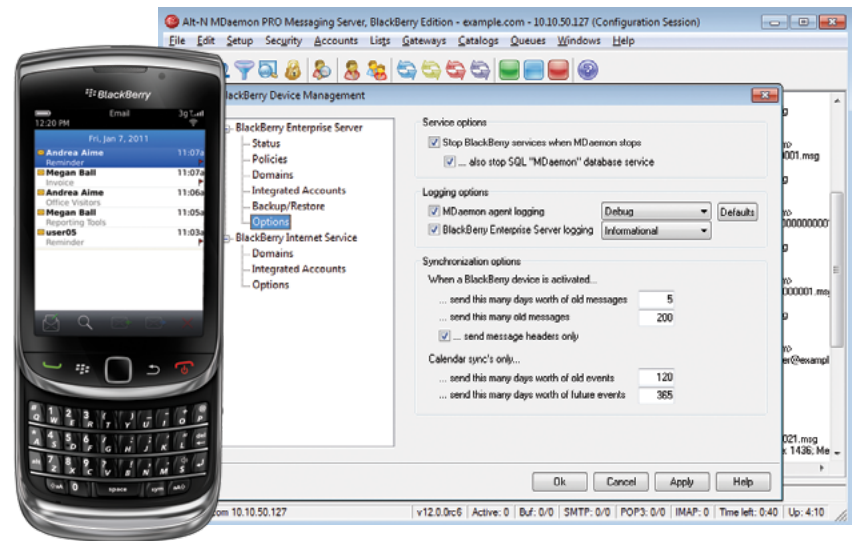
# BlackBerry® Edition

## Key Features

- Built-in support for BlackBerry® smartphones provides wireless synchronization of email, calendar, and contacts to BlackBerry smartphones as well as IT policy features to manage devices.
- One simple console makes it easy to manage email and BlackBerry smartphone functionality.
- Flexible design using IMAP, POP, SMTP, and DomainPOP services. Does not require a Server Operating System.
- Trusted security using DKIM, SenderID for authentication and verification, anti-spam engine, Bayesian learning, SSL/TLS, backscatter protection, and an additional proactive malware prevention layer (via SecurityPlus plug-in).
- Custom scheduling and mail queuing for more flexible outbound mail management.
- Mobility enabled to support other smartphone devices (Windows Mobile®, Palm®, Symbian®, or Apple®).
- Groupware enabled (Mail, Calendar, Contacts, Tasks, Notes, and Journals).
- Closed Instant Messaging application.
- Simplified archiving and rapid failure recovery.
- Multiple domain support and integrated web administration.

## Email, Groupware, IM, and Mobile Device Compatibility Designed for SMBs

The MDAemon® Messaging Server has been deployed in over 90 countries around the world and is designed to meet the needs of small-to-medium businesses that require an easy-to-use on-premise messaging server – without expensive administration or high per-user costs. It simplifies messaging and collaboration requirements with an intuitive, user-friendly design providing enterprise-level features that meet the needs of an SMB budget. And with built-in support for BlackBerry® smartphones, you can take advantage of the mobility and security millions depend on in an all-in-one easy to manage platform.



The Windows®-based mail server requires almost no maintenance and offers the flexibility of remote administration with features such as the ability to lock or erase data on a lost or stolen BlackBerry smartphone, making security policy management simple. Enjoy wireless access to advanced email, an up-to-date calendar, integrated contacts, security features, and more on BlackBerry smartphones through MDAemon® Messaging Server, BlackBerry® Edition.

MDAemon also supports other smartphone platforms to help meet the needs of IT administrators who manage the mobility needs of the business.

## Mobilizing your workforce is easy with the built-in support for BlackBerry smartphones. Give your BlackBerry smartphone users:

### Key Benefits

- **Highly Secure.** Incorporates multiple layers of security techniques such as Relay Controls, IP Shielding, SMTP Authentication, and reverse lookups, to minimize possible server exploits.
- **Collaboration.** Mail, Calendar, Contacts, Tasks, Notes, and Journal. Supports Microsoft® Outlook® (via the Outlook Connector for MDAemon plug-in).
- **Easy Administration and Maintenance.** Intuitive, task-based GUI, easy account database integration (via Active Directory, LDAP, ODBC, or MDAemon's Minger verification), plus simple back-up and restore.
- **Remote Access.** Access email from almost anywhere using the integrated webmail client or perform remote account management from the administrative application.
- **Integrated Messaging Client.** Provides email and calendar notification within the Instant Messaging applet for complete and flexible inter-office communications.
- **Powerful Mail List Engine.** Create and manage bulletins, discussions, and distribution lists easily to effectively communicate on multiple levels.

- **Advanced Email** – Get wireless access to your email while on the go. Receive full html email, edit attachments, flag email for follow-up, search for email no longer stored on your BlackBerry smartphone, and more.
- **Wireless Synchronization** – Stay in sync with your email, calendar, contacts, and more. Business email, calendar, contacts, tasks lists, and memos are wirelessly synchronized without having to connect to your computer, so you never miss a beat.
- **Up-to-date Calendaring** – Stay on schedule with current appointments. Send and respond to meeting invitations straight from your BlackBerry smartphone and never worry about updating your desktop. You can even look up colleagues' availability.
- **Integrated Contacts** - Enjoy quick and easy access to personal and business contacts. Contacts added in the MDAemon email client automatically synchronize with the address book on the BlackBerry smartphone, and vice versa, with no need to connect the BlackBerry smartphone to your computer. Synchronize contact folders, personal distribution lists, and more.
- **Highly Secure** – Protect your information. With MDAemon Messaging Server, BlackBerry Edition, data transmitted to and from BlackBerry smartphones is encrypted using Advanced Encryption Standard (AES) and Triple Data Encryption Standard (Triple DES).

### System Requirements

- Microsoft Windows XP/2003/ Vista/2008/7® (including 64-bit versions)
- Pentium® 4 2.4 GHz processor or higher (dual core processor recommended)
- 1 GB of memory (2 GB recommended)
- Typical Hard disk space required: 1GB, plus additional space for stored mail
- Network Interface Card (NIC) with TCP/IP network protocol installed
- Internet or Intranet communication capabilities

Certain features outlined in this document may require activation of a BlackBerry smartphone with a data plan. Check with your service provider for availability, costs and restrictions.

The easy-to-use webmail client offers over 25 languages and an intuitive user experience.

Simple archiving capabilities make it easy to help safeguard your email messages while managing the IT policy needs of your business.

The instant messaging plug-in, included with MDAemon®, provides closed Instant Messaging (IM) with file sharing and group chat, address book synchronization, and an email notification tray applet.

www.AltN.com Phone: 866-601-ALTN (2586)  
**Alt-N Technologies® is a Subsidiary of Research In Motion®**  
 © 1996 - 2011 Alt-N Technologies, Ltd.  
 MDAemon and Alt-N are trademarks of Alt-N Technologies, Ltd.  
 BlackBerry®, RIM®, Research In Motion® and related trademarks, names and logos are the property of Research In Motion Limited ("RIM") and are registered and/or used in the U.S. and countries around the world. Used under license. All trademarks are property of their respective owners.  
 03.22.2011

Alt-N and RIM assume no obligations or liability and make no representation, warranty, endorsement or guarantee in relation to any aspect of any third party products or services. Apple is a trademark of Apple Inc. Windows Mobile, Windows, Microsoft and Outlook are trademarks of Microsoft Corporation. Palm is a trademark of Palm Trademark Holding Company, LLC. Symbian is a trademark of Nokia Corporation. Pentium is a trademark of Intel Corporation.